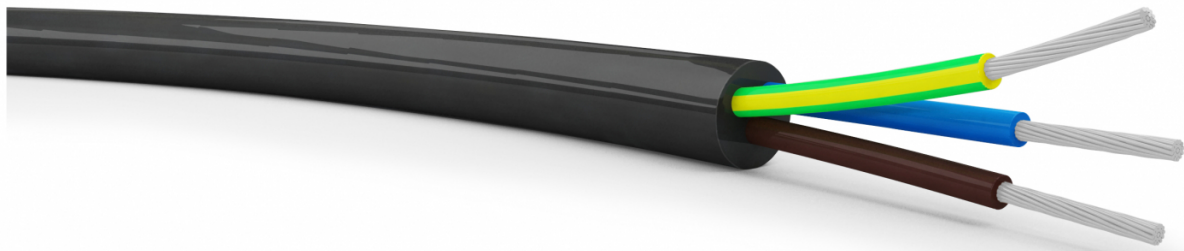


SILICONE FG40R

Silicone cables

material: PVC-SILICONE tipology: MULTICORE



Applications: Appliances Cables

Conditions of employment

Type of electrical conductor: Flexible tinned copper

Main rule:

Conductor: EN 60228; IEC 60228

Description

Multi core cable with silicone rubber insulation and PVC sheath.

Technical Specifications

Review number	n. 4 - 23/2/2011
Nominal tension	300/500 V
Type of insulation	EI2
Type of outer sheath	TM3
Color of the outer sheath	Black
Operating temperature	-60° C +90° C
Test voltage	2000 V
Insulation tolerance	± 0,1
Sheath tolerance	± 0,2

Documents::

- [Certificate](#)

Sections

Nominal section	Max wire diameter	Conductor diameter	Insulation thickness	Average sheath thickness	Average diameter $\pm 0,1$	Copper electric resistance 20°C	Indicative weight	CU Factor
(Nxmm ²)	(mm)	(mm)	(mm)	(mm)	(mm)	(ohm/km)	(kg/km)	(kg/km)
2x0,50	0,21	0,859	0,60	0,60	5.6	40,10	NA	9,6
2x0,75	0,21	1,052	0,60	0,60	6.0	26,70	NA	14,4
2x1,00	0,21	1,215	0,60	0,80	6.6	20,00	NA	19,2
2x1,50	0,26	1,485	0,70	0,80	7.6	13,70	NA	28,8
3x0,50	0,21	0,859	0,60	0,60	5.9	40,10	NA	14,4
3x0,75	0,21	1,052	0,60	0,60	6.3	26,70	NA	21,6
3x1,00	0,21	1,215	0,60	0,80	7.0	20,00	NA	28,8
3x1,50	0,26	1,485	0,70	0,90	8.2	13,70	NA	43,2
4x0,75	0,21	1,052	0,60	0,80	7.3	26,70	NA	28,8
4x1,00	0,21	1,215	0,60	0,90	7.8	20,00	NA	38,4
5x0,75	0,21	1,052	0,60	0,90	8.2	26,70	NA	36
5x1,00	0,21	1,215	0,60	0,90	8.5	20,00	NA	48

Note:

The manufacturer reserves the right to modify all or part of the data shown in this catalog

Refer to the CEI EN 50565 standard series as a guide to the use of cables with rated voltage not exceeding 450/750 V (U₀ / U) and to the CEI 20-92 standard as a guide for handling and storing wooden cable reels electric.

Elettro Brescia S.p.A. - Via Bulloni, 58 - 25050 Camignone di Passirano (BS)

Tel. +39 0306850663 - Fax +39 030 6850444 - email info@elettrobrescia.it